



mosaica.

Business Intelligence Software
for Corporate Responsibility

Data-Driven Insights At Your Fingertips

What if your enterprise solutions met all your corporate responsibility ambitions?

Modern responsible sourcing strategies demand sophisticated tools to enable easier, faster, and better decision making:



Monitoring use of verified responsible materials & progress against targets



Managing due diligence processes for certified supply chains



Integrating commercial and management decisions with real-time data

Mosaica brings your data together to create unified, actionable insights in real time, eliminating guesswork, time consuming data analyses, and out-of-date data.

Mosaica helps you spend less time managing data and more time delivering results.

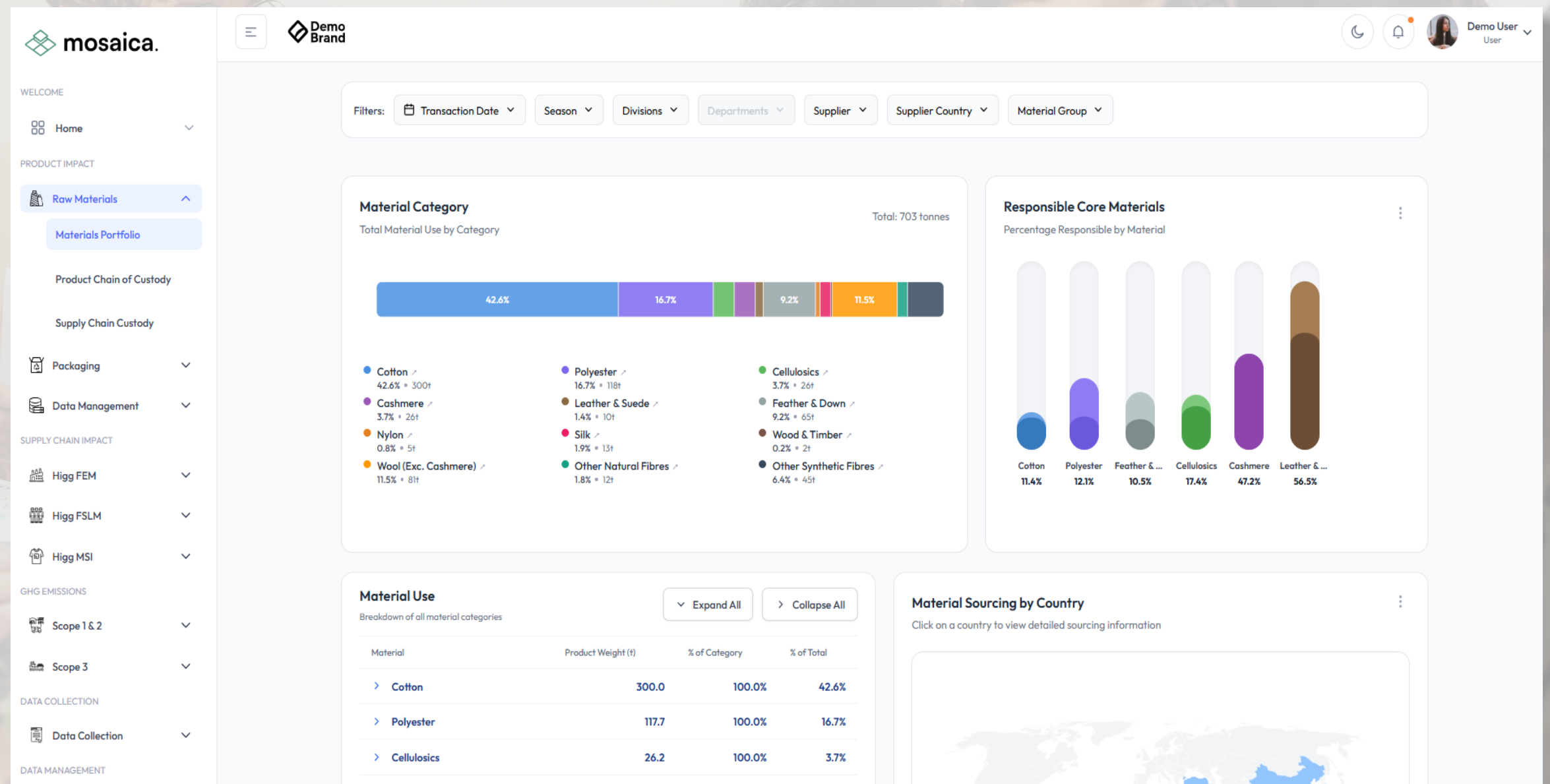


Integrating Cross-Organisation Decision Making

Automated data analyses for tracking and communicating responsible sourcing progress

For brands and retailers using enterprise PLM systems and those using boutique or in-house solutions, Mosaica can fully automate the measurement of your material footprint:

- Track business critical KPIs through access to real-time data,
- Reduce administrative burdens by automating data collection and analysis,
- Improve accuracy, reliability and accessibility of internal and external reporting, and,
- Provide a single communications channel tracking progress and action-items, helping break down silos between teams.

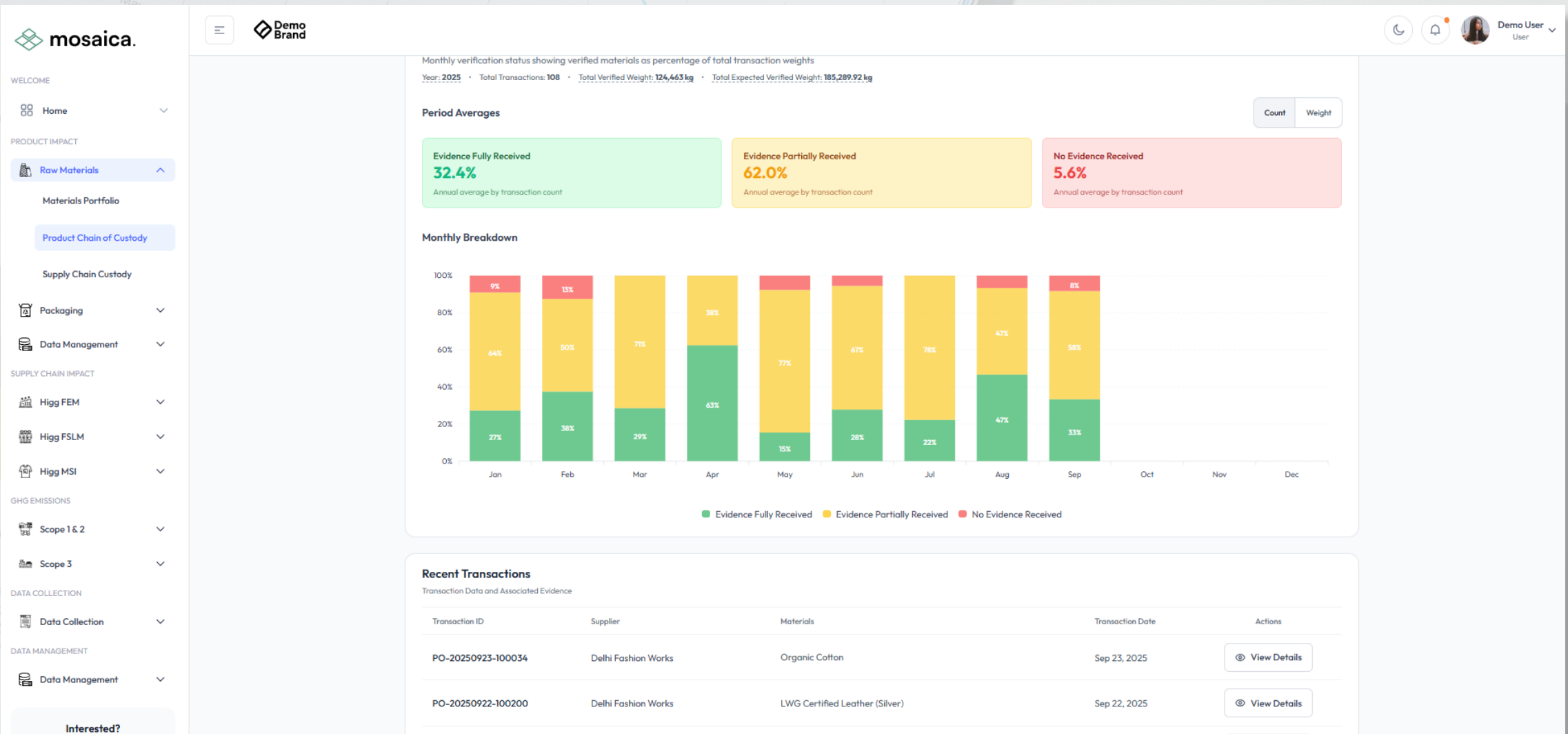


Tracking Verified Responsible Materials

Managing chain of custody risks has never been easier

Integrating with your commercial systems, Mosaica keeps track of supply chain evidence for individual transactions - collecting, reading, and summarising Transaction Certificates, invoices, and other documents for verified responsible materials.

Strengthen and automate your existing due diligence processes while reducing administrative burdens of collecting, sorting and validating evidence.



- Automate the collection and management of transaction certificates and other evidence for GOTS, LWG, Downpass as well as all Textile Exchange standards such as OCS, GRS and RWS*.
- Track the proportion of orders that are fully compliant with your due diligence processes, as well as those that fall short.
- Match risk assessment categories to specific orders, styles or stock-keeping-units for up-to-date risk management reviews.
- Keep teams and suppliers up-to-date on performance and set automated reminders for missing evidence.

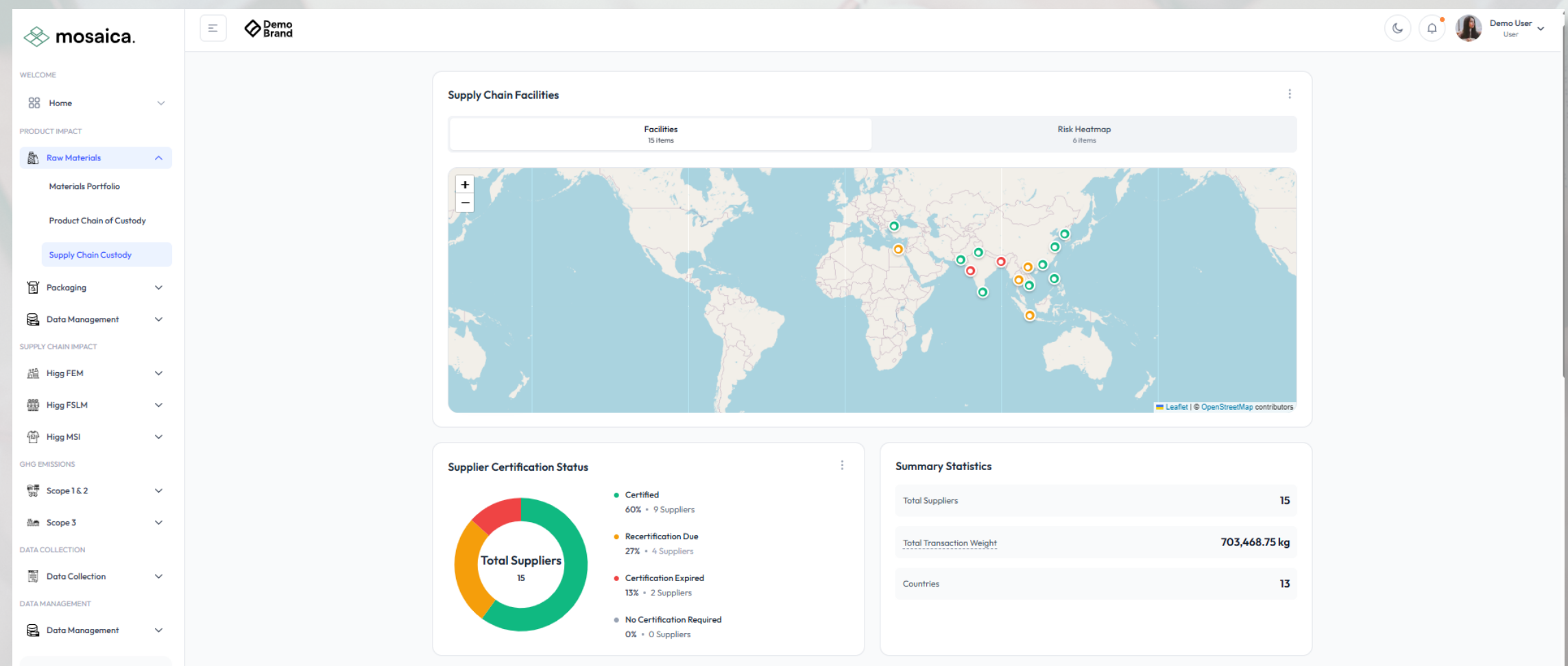
*GOTS: Global Organic Textile Standard, LWG: Leather Working Group, OCS: Organic Content Standard, GRS: Global Recycled Standard, RWS: Responsible Wool Standard. All standard names are the property of their respective owners.

Managing Certified Supply Chains

At-a-glance chain of custody status of your supply chain

Using existing data systems, Mosaica can map your direct suppliers, factories and other supply chain actors. Use this information to keep up-to-date on the status of certifications and other industry accreditations in your supply chain:

- Supplement transaction certificate tracking by collecting accompanying scope certificates and associating them with your supply chains, helping to pro-actively manage expiring certifications.
- Compare factory & supplier orders by risk status against the full production of your organisation to help direct priorities.
- Track the proportion of your supply chain that is certified, allowing better forecasting of future performance.



*Standards including, but not limited to Global Organic Textile Standard (GOTS), Leather Working Group (LWG), Organic Content Standard (OCS), Global Recycled Standard (GRS), Responsible Wool Standard (RWS) and all other material- or production-specific Textile Exchange standards.

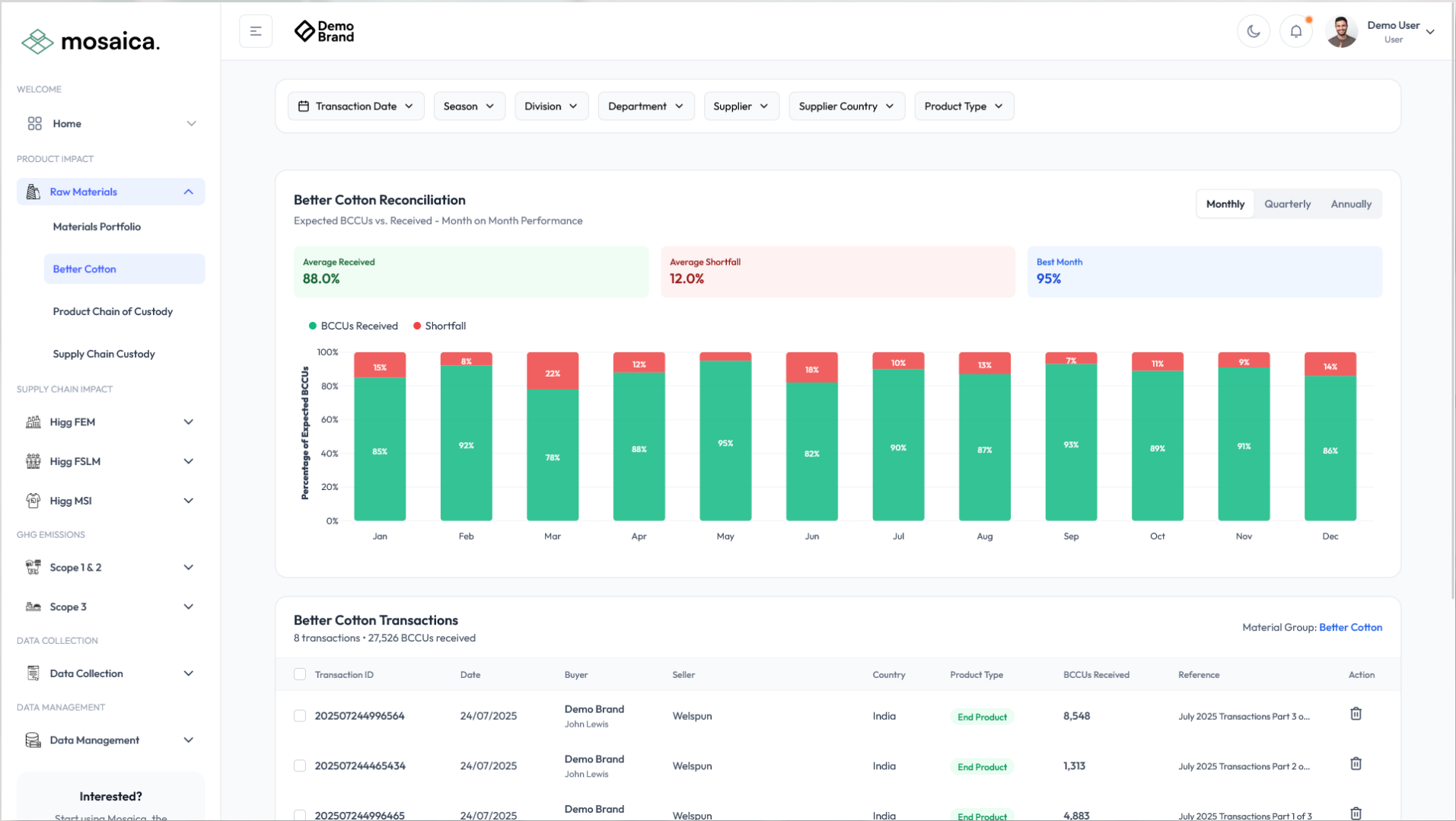
Dedicated Material Dashboards

Performance tracking and forecasting for specific materials

Mosaica lets you target specific materials with custom dashboards, helping you to track performance on key strategic materials, including mass-balance Better Cotton, LWG leather and timber, as well as seasonal materials like cashmere.

Mosaica's dedicated Better Cotton Dashboard (left) automatically collects, organises and analyses Better Cotton Claim Units (BCCUs) to help stay on top of your cotton sourcing strategy:

- Track total BCCUs vs. those expected from your material consumption calculations.*
- Focus attention on high-priority suppliers to close gaps more quickly.*
- Give teams and departments a customised picture of their performance and outstanding actions.*



Contact Us

Interested in learning more?

Mosaica has been designed to meet the needs of modern corporate responsibility teams within the apparel & fashion sector.

If you are interested in any of the features of Mosaica, or how we can help your organisation with tracking, analysing, and communicating corporate responsibility data, we would be pleased to provide a no-obligation consultation and demo.

For more details, you can contact co-founder Dan Davies at dan.davies@mosaica.io or use any of the contact details listed below.

We would be delighted to hear from you.



+44 (0)20 3637 7375



info@mosaica.io



71 - 75 Shelton Street
London
WC2H 9JQ
United Kingdom

